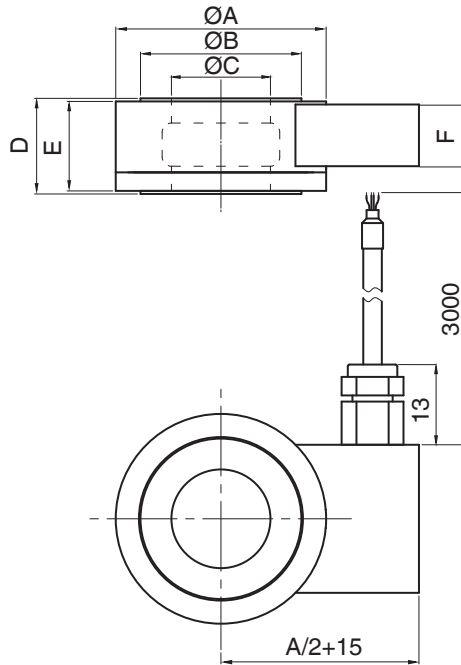


尺寸及量程 / Size and Capacity



SIZE(mm)	A	B	C	D	E	F	材料 / Material	重量 / Weight
CAP (kN)								
3/5/10/20	34	24	16	15	14	10	不锈钢 / Stainless steel	0.1kg
50/100/150/200	69	54	32	50	49	30		1.1kg
100/200/300/450	95	78	50	50	49	30		1.9kg

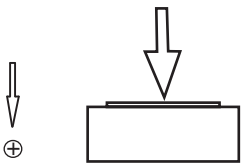
特点和用途 / Features & Applications

- 垫圈式环形不锈钢材料传感器
- 形变量小
- 可定制, IP65
- 适用于螺钉及杆件的张力测试、挤压力测试、组装力测试及其他压力测试
- Washer type load cell made of stainless steel
- Small deformation
- Customizable, IP65
- Suitable for tension measurement of screw bolts and rod pieces, extrusion force test, assemble pressure test and other pressure test

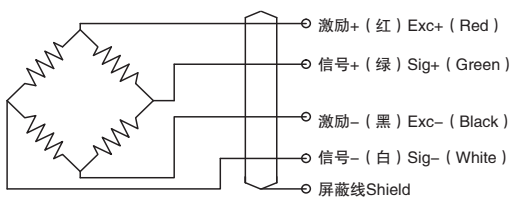
技术参数 / Technical Parameters

参数	Specifications	技术指标 / Technique
输出灵敏度	Rated output	1.0±0.1 mV/V
零点输出	Zero balance	±2% F.S.
非线性	Non-linearity	±2% F.S.
滞后	Hysteresis	±2% F.S.
重复性	Repeatability	±0.5% F.S.
蠕变 (30分钟)	Creep (30min)	±0.5% F.S.
灵敏度温度漂移	Temp. effect on output	±0.05% F.S. / 10°C
零点温度漂移	Temp. effect on zero	±0.05% F.S. / 10°C
输入电阻	Input impedance	385±30Ω
输出电阻	Output impedance	350±5Ω
绝缘电阻	Insulation	≥5000MΩ
激励电压	Recommended excitation	5...10VDC
最大激励电压	Maximum excitation	15V
温度补偿范围	Compensated temp. range	-10 ... 40°C
工作温度范围	Operation temp. range	-20 ... 80°C
安全超载	Safe overload	150% F.S.
极限超载	Ultimate overload	200% F.S.
电缆线尺寸	Cable size	Ø3×3000 mm
防护等级	Protection class	IP65
连接方式	Cable color code	Input: Red(+) Black(-); Output: Green(+) White(-); 输入: 红 (+) 黑 (-); 输出: 绿 (+) 白 (-);

受力方式 / Load Direction



接线图 / Schematic Wiring Diagram



注: 屏蔽线不与弹性体相连。
Note: Cable shield is not connected to element.